


Conclusions and Next Steps

Northeastern
IPM Allison Taisey
Center

The Northeastern IPM Center

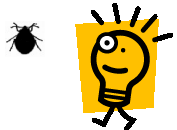
and

you ()

The person who makes it happen

Selling Points for IPM



- A system-wide approach to pest control that synergizes the efforts of maintenance, social workers, and pest control
- Has potential for great PR: partnerships, happy residents, higher inspection scores = more funding, "healthy", "sustainable", and "green"
- There is a business case: reduced transfer requests, reduced pest work orders, increased satisfaction with housing, cheaper in the long run
- IPM is a healthy and sustainable approach to reducing asthma triggers
- In the near future, IPM will be the required standard practice for pest control
- HUD webcast on IPM: www.hud.gov/webcasts/archive/multifamily.cfm
- It's not rocket science...it's cockroaches: take their food, water, shelter, and access points away
- NO ONE has to live with pests!









IPM is...

- An approach to pest control that uses the most economical means with the least possible hazard to people, property, and the environment
- A healthy approach to pest control
 - Take measures to prevent infestations from growing
 - Eliminate the source of the problem while utilizing reduced risk pesticides if appropriate
 - Monitor and inspect regularly (in place of applying pesticides regularly) so that pest problems are dealt with quickly and efficiently

Next Steps

- Partner with local support organizations: faith-based, public health, asthma, universities, each other, and 
- Find resources that are already developed: pest factsheets, model RFPs, guidelines, training slides at stoppests.org, and 

Next Steps

-  Set up your "IPM Team:" property manager, maintenance staff, resident support services, pest control contractor, residents, and local support groups
 -  Encourage communication through documentation procedures
 -  Educate EVERYONE to think like a pest – know the enemy
 -  Focus efforts on accessing, inspecting, and getting resources to pest reservoirs
 - Trash handling areas
 - Homes of hoarders
 - Homes of the disabled
 - Homes in which illegal activities are occurring (privacy)
 - 
-  Communicate success stories by e-mailing aat25@cornell.edu

A SAMPLE of Resources

- 🪲 E-mail bedbugworks@gmail.com for bed bug recommendations report
(will be released in the next 2 months)
- 🪲 Download training slides and resources from www.stoppests.org
 - 🪲 T4: pdf notes for trainers
 - 🪲 IPM in MFH: ppts and resources
 - 🪲 Resident Briefing: video and IPM tools
- 🪲 Get more information from state IPM programs such as www.nysipm.cornell.edu/whats_bugging_you/default.asp

A close-up photograph of an HP LaserJet printer. A small, brown mouse is peering out from a narrow slot in the printer's internal mechanism. The mouse's head and front paws are visible, and it appears to be looking towards the camera. The printer is black and blue, with the HP logo and 'hp LaserJet' text visible on a blue strip at the bottom right. The text 'The End' is overlaid in white in the center of the image.

The End



hp LaserJet

C